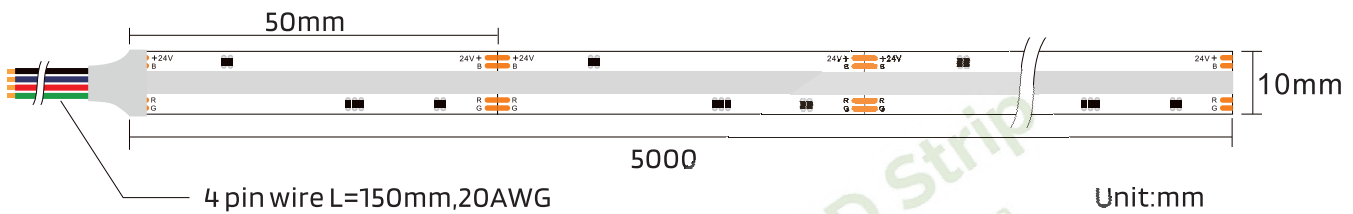


Key Feature

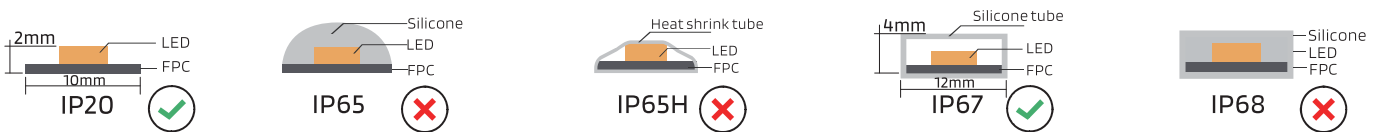
- RGB COB flex strip, no light spots
- 840LEDs/m, 15W/m, 10mm pcb board
- Dc24v only, a wide range of colors option
- High quality, with the RGB LED controller



Drawing



Waterproof Rate



Basic Parameters

Dimension	5000mm×10mm×2mm
Chips/m	840Chips
Power/m	15W
CRI	/

Cutting Unit	50mm(24V)
Input Current/m	0.625A
Input Voltage	24VDC
Ambient Temperature	-20℃~+50℃

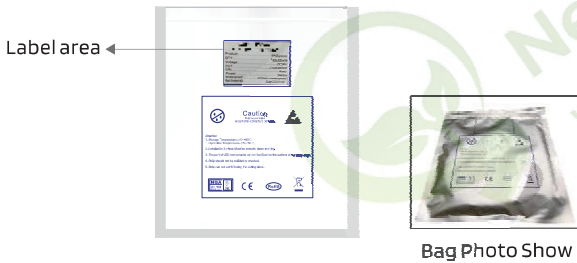
Photo-electric Parameters

Photo-electric Parameters

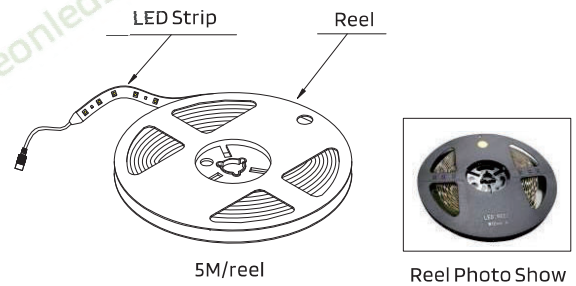
CCT(K)	Peak Wavelength(nm)	Dominant Wavelength(nm)	Lumen (LM/M)	Efficacy (LM/W)
Red	629	620	195	34
Green	518	523	368	70
Blue	463	467	40	20
RGB	/	/	600	45

Packaging

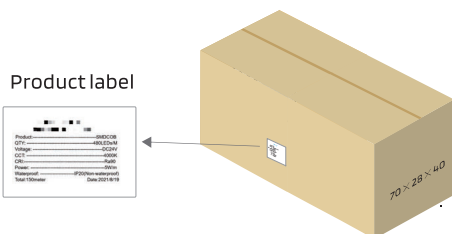
Anti-Static bag



Plastic reel



Carton box



Carton box size: 70 × 28 × 40 (500M)

Packing number

