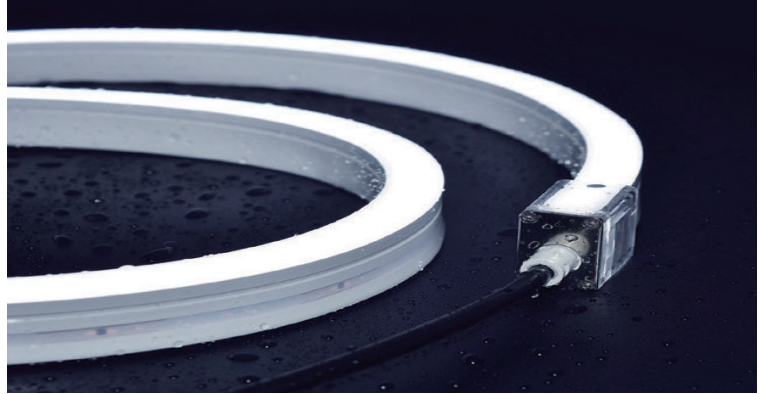
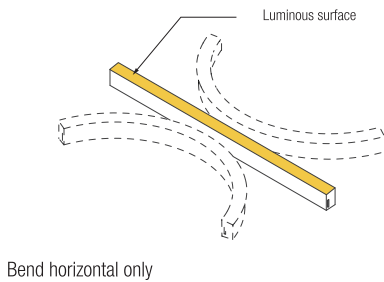
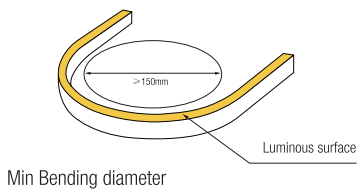
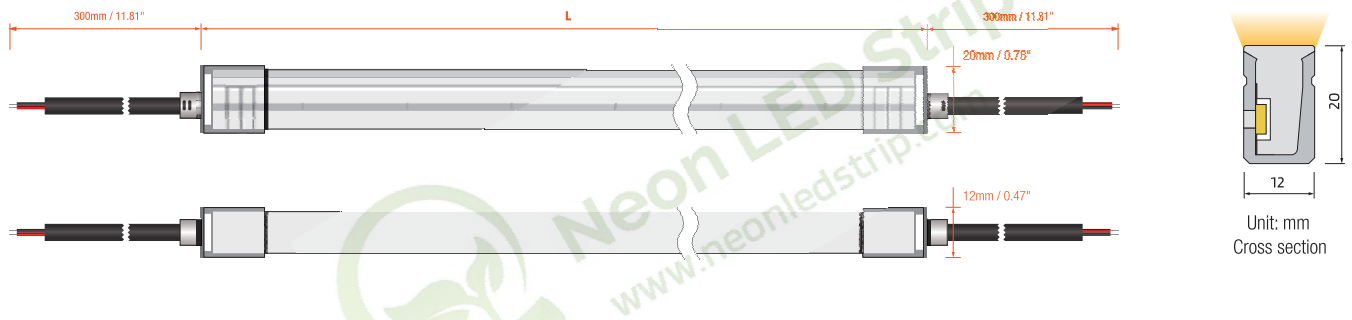


## Key Feature

- High Efficiency Side View Neon Strip 12mm\*20mm
- Normal power 5W / 10W / 15W optional
- Ip67 Waterproof grade, Uniform light output
- With high quality, Soft light effect bringing better indoor and outdoor applications



## Drawing



## Electrical Parameter

Voltage	LED PIN Temperature	Storage Temperature	Ambient Temperature	CRI
DC24V	Max. 65 °C	-25 °C ~ 60 °C	Min.-25°C Max(Table below)	>90

## Specification

Power(w/m)	Efficacy(lm/w)@4000K	Max Ambient Temperature
5 w/m	62lm/W	55°C
10 w/m	61lm/W	45°C
15 w/m	57lm/W	35°C

Due to the tolerance of the production and electrical components, output value and electrical power can vary up to 10%

## Single Color(Lm/m)

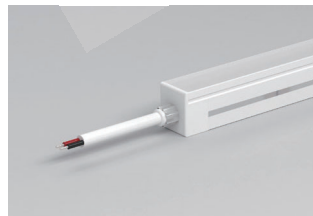
CCT(K)	CRI	Voltage	Power(W)	Lumen (LM/M)	Efficiency (LM/W)	Unit Length (mm)	Max. Run Length (M)	CC/CV
2700K±100	≥90	DC24V	10	530	53	50	12(CC)	CC/CV
3000K±100	≥90	DC24V	10	530	53	50	12(CC)	CC/CV
3500K±200	≥90	DC24V	10	580	58	50	12(CC)	CC/CV
4000K±300	≥90	DC24V	10	610	61	50	12(CC)	CC/CV
5000K±300	≥90	DC24V	10	590	59	50	12(CC)	CC/CV
6000K±300	≥90	DC24V	10	590	59	50	12(CC)	CC/CV

- The given color temperature is the temperature of finished product.
- The given data are typical values due to the tolerances of the production process and the electrical components, values for light output and electrical power can vary up to 10%.
- All products can be dimmed; the dimmer's voltage should conform to the rated voltage of the led light.  
The output frequency of the dimmer of the constant-current led light should be less than 2K Hz, and the output PWM can control the led light.

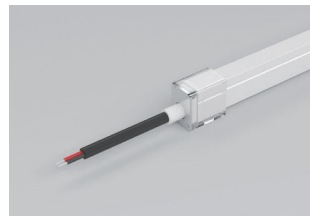
## Cable Entry



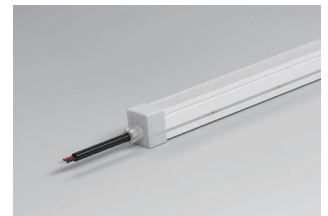
Integral end cap



Combined end cap



Silicone end cap



Front Cable Entry:  
The cable could be hidden in all directions by the flexible design.

Side Cable Entry:  
The cable could be perfectly hidden to achieve seamless light connection.

Bottom Cable Entry:  
The cable could be perfectly hidden to achieve seamless light connection.

