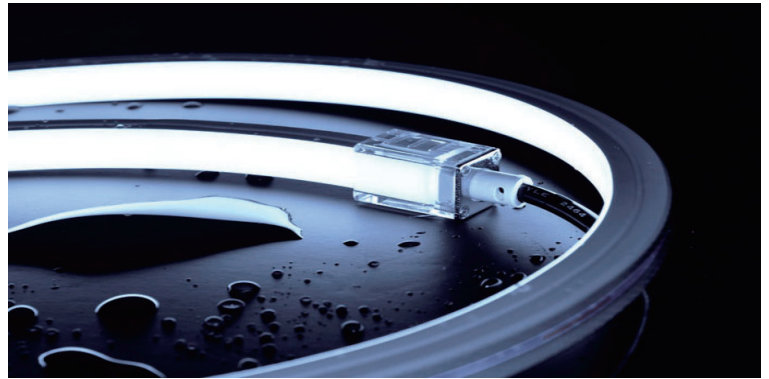
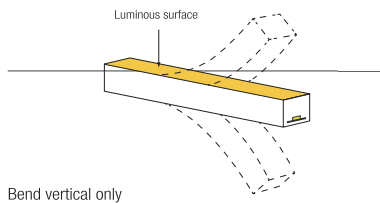
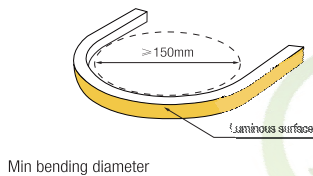
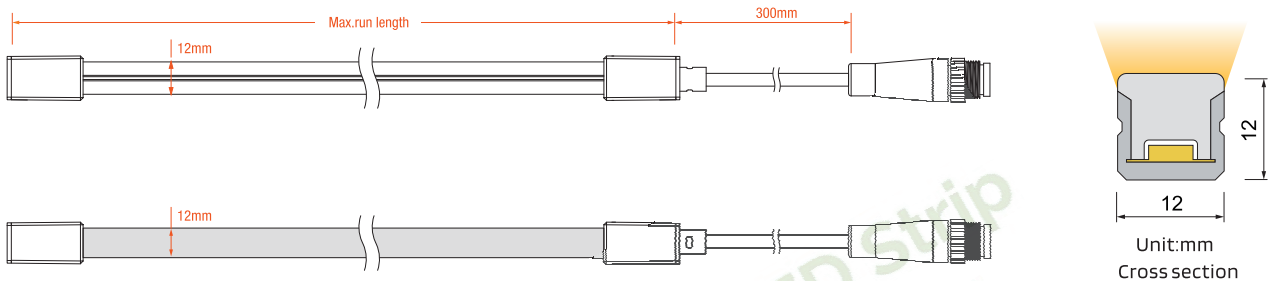


## Key Feature

- High Efficiency Top View Neon Strip
- 12mm\*12mm Only, 5W/10W optional
- IP67 Waterproof grade, Uniform light output
- With high quality, Soft light effect bringing better indoor and outdoor applications



## Drawing



### Electrical Parameter

Voltage	LED P/N Temp.	Storage Temp.	Ambient Temp.	CRI
DC24V	MAX.65°C	-25°C~60°C	Min.-25°C Max(Table below)	≥90

### Speciation

Power(w/m)	Efficiency(lm/w)@4000K	Max Ambient Temp.
5w/m	95lm/w	55°C
10w/m	93lm/w	45°C

Due to the tolerance of the production and electrical components, output value and electrical power can vary up to 10%

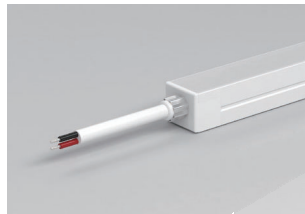
### Single Color(Lm/m)

CCT(K)	CRI	Voltage	Power(W)	Lumen (LM/M)	Efficiency (LM/W)	Unit Length (mm)	Max.Run Length (M)	CC/CV
2700K±100	≥90	DC24V	10	820	82	50	8(CC)	CC/CV
3000K±100	≥90	DC24V	10	880	88	50	8(CC)	CC/CV
3500K±200	≥90	DC24V	10	950	95	50	8(CC)	CC/CV
4000K±300	≥90	DC24V	10	930	93	50	8(CC)	CC/CV
5000K±300	≥90	DC24V	10	940	94	50	8(CC)	CC/CV
6000K±300	≥90	DC24V	10	950	95	50	8(CC)	CC/CV

- The maximum series length refers to the maximum single end power supply length of the constant current strip under the condition of standard 30cm wire .
- For the load capacity of the solder free end cap, please refer to <The Maximum Load Capacity of Power Cables>
- The given color temperature is the temperature of finished product.
- The given data are typical values due to the tolerances of the production process and the electrical components, values for light output and electrical power can vary up to 10%.
- All products can be dimmed; the dimmer's voltage should conform to the rated voltage of the led light.  
The output frequency of the dimmer of the constant-current led light should be less than 2K Hz, and the output PWM can control the led light.

## Cable Entry

Integral end cap

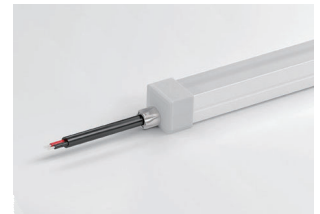


**Front Cable Entry:**  
 The cable could be hidden in all directions by the flexible design.

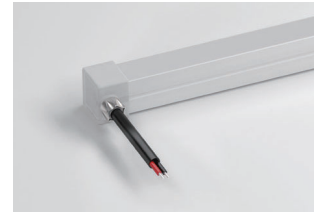
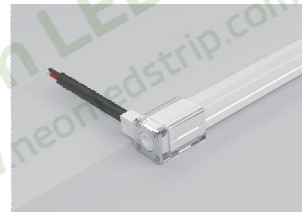
Combined end cap



Silicone end cap



**Side Cable Entry:**  
 The cable could be perfectly hidden to achieve seamless light connection.



**Bottom Cable Entry:**  
 The cable could be perfectly hidden to achieve seamless light connection.

