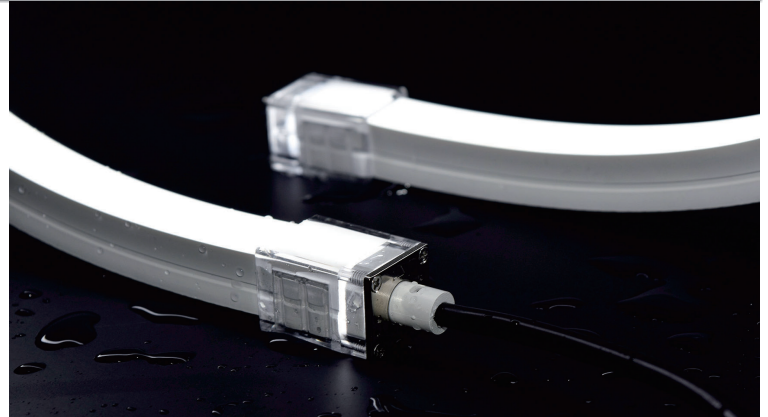
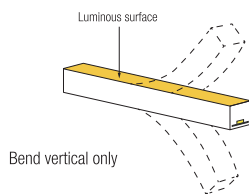
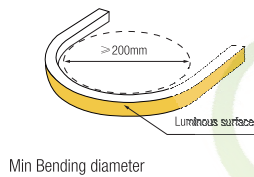
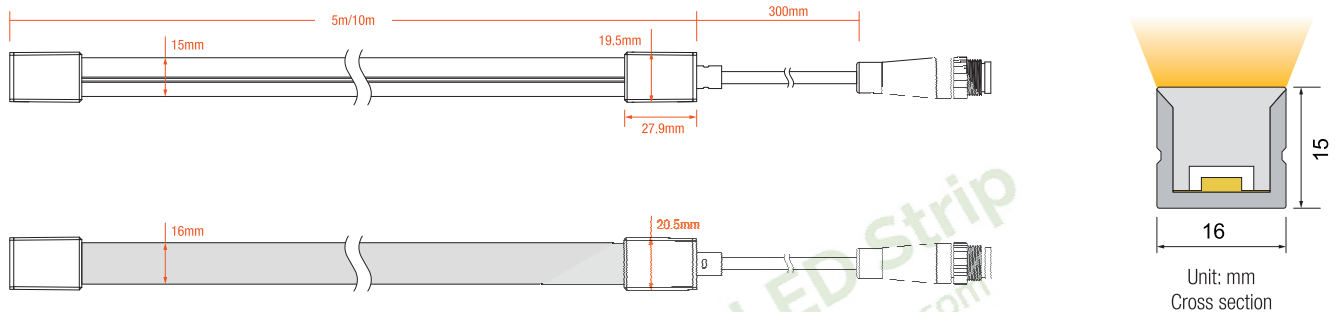


Key Feature

- High Efficiency Top View Neon Strip
- 16mm*15mm Only, 5W/10W/15W optional
- IP67 Waterproof grade, Uniform light output
- With high quality, Soft light effect bringing better indoor and outdoor applications



Drawing



Electrical Parameter

Voltage	LED PIN Temperature	Storage Temperature	Ambient Temperature	CRI
DC24V	Max. 65 C	-25 C ~ 60 C	Min. -25°C Max(Table below)	≥90

Specification

Power	Efficacy@4000K	Max Ambient Temperature
5 w/m	84 lm/w	55°C
10 w/m	82lm/w	45°C
15 w/m	78lm/w	35°C

Due to the tolerance of the production and electrical components, output value and electrical power can vary up to 10%

Single Color(Lm/m)

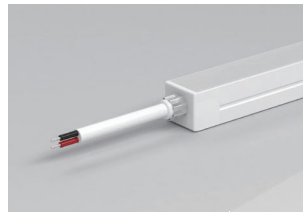
CCT(K)	CRI	Voltage	Power(W)	Lumen (LM/M)	Efficiency (LM/W)	Unit Length (mm)	Max. Run Length (M)	CC/CV
2700K±100	≥90	DC24V	10	730	73	50	12(CC)	CC/CV
3000K±100	≥90	DC24V	10	770	77	50	12(CC)	CC/CV
3500K±200	≥90	DC24V	10	850	85	50	12(CC)	CC/CV
4000K±300	≥90	DC24V	10	820	82	50	12(CC)	CC/CV
5000K±300	≥90	DC24V	10	900	90	50	12(CC)	CC/CV
6000K±300	≥90	DC24V	10	890	89	50	12(CC)	CC/CV

- The maximum series length refers to the maximum single end power supply length of the constant current strip under the condition of standard 30cm wire .
- For the load capacity of the solder free end cap, please refer to <The Maximum Load Capacity of Power Cables>
- The given color temperature is the temperature of finished product.
- The given data are typical values due to the tolerances of the production process and the electrical components, values for light output and electrical power can vary up to 10%.
- All products can be dimmed; the dimmer's voltage should conform to the rated voltage of the led light.
The output frequency of the dimmer of the constant-current led light should be less than 2K Hz, and the output PWM can control the led light.

Cable Entry

Front Cable Entry:
The cable could be hidden in all directions by the flexible design.

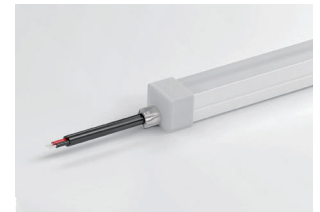
Integral end cap



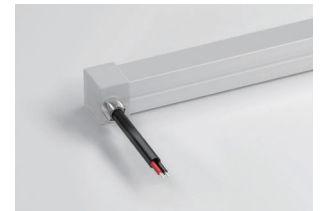
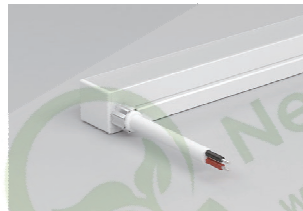
Combined end cap



Silicone end cap



Side Cable Entry:
The cable could be perfectly hidden to achieve seamless light connection.



Bottom Cable Entry:
The cable could be perfectly hidden to achieve seamless light connection.

