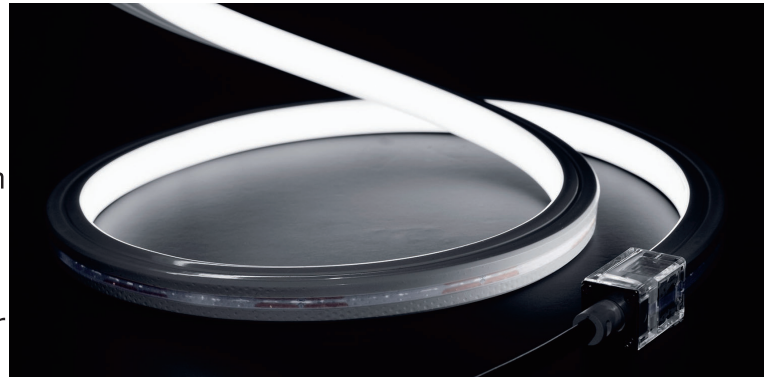
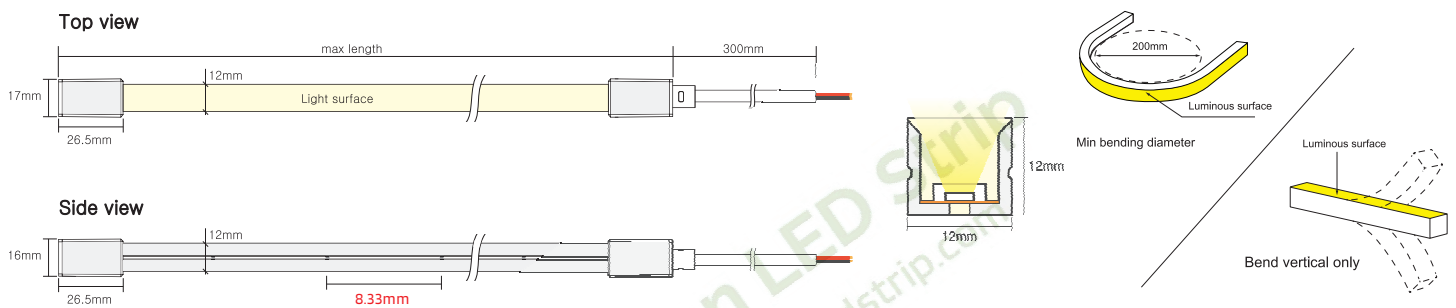


Key Feature

- Top View Neon Strip 12mm*12mm only
- IP67 waterproof grade, bending diameter is 200mm
- Uniform light output, no light spots
- With high quality, Soft light effect bringing better indoor and outdoor applications



Drawing



Basic PARAMETERS

Dimension	12mm × 12mm (W*H)	Cutting Unit	50mm (Single color) 50mm (tunable white) 62.5mm (RGB)
Power/m	5W/10W	Input Voltage	24VDC
CRI	90+	Ambient Temperature	-20°C ~ +45°C

Photo-electric Parameters (Single color)

CCT(K)	CCT Range	CRI	5W/M Lumen (LM/M)	10W/M Lumen (LM/M)
2100k	2000-2200	90+	289	559
2400k	2300-2500	90+	287	560
2700K	2600-2800	90+	350	670
3000K	2900-3100	90+	329	638
3500K	3400-3700	90+	355	660
4000K	3800-4300	90+	346	677
5000K	4800-5300	90+	345	680
6000K	5900-6400	90+	335	660

Photo-electric Parameters (tunable color)










CCT(K)	CCT Range	CRI	5W/M	10W/M
			Lumen (LM/M)	Lumen (LM/M)
 WW	2000-2300	90+	123	194
 W	5000-5500	90+	160	320
 WW+W	3400-3700	90+	240	475

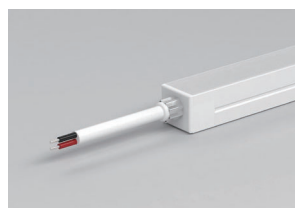
Photo-electric Parameters (RGB)

CCT(K)	Color (NM)	5W/M	10W/M
		Lumen (LM/M)	Lumen (LM/M)
 Red	620-625	130	267
 Green	515-525	374	703
 Blue	460-465	71	129
 Yellow	585-595	28	51
 Pink	Pink	145	279
 RGB	RGB	175	290

Cable Entry

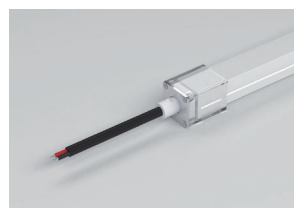
Integral plug

Front Cable Entry:
The cable could be hidden in all directions by the flexible design.



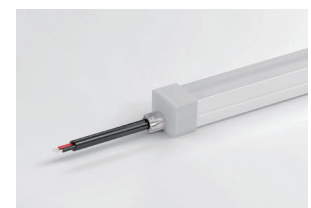
Combined end cap

Side Cable Entry:
The cable could be perfectly hidden to achieve seamless light connection.

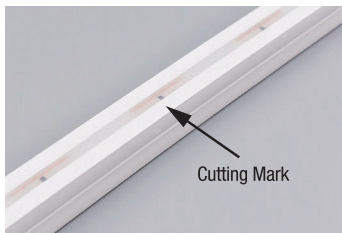


Silicone end cap

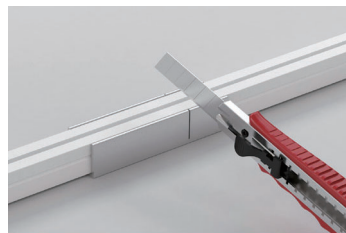
Bottom Cable Entry:
The cable could be perfectly hidden to achieve seamless light connection.



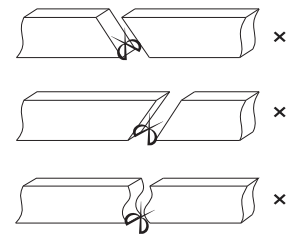
Cutting Mark



Remark: The bottom of the led strip has transparent window, the black marker is the cutting position



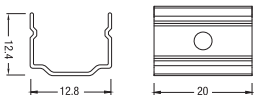
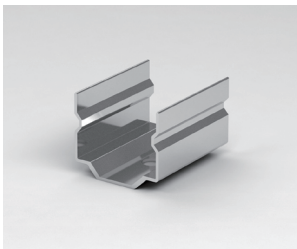
Use a cutting jig, vertical cutting precisely in the exact cutting position of led strip.



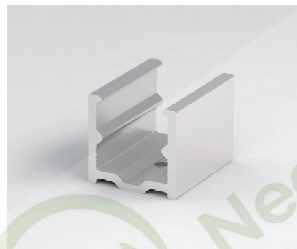
Please don't be feel free to cut and cut into an oblique angle or cambered section.

Mounting Way

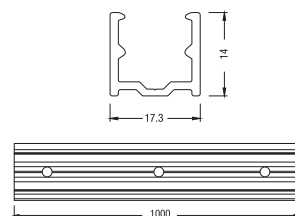
Stainless Steel Mounting clips



Aluminium Mounting clips



Aluminium Profile



Suspension Installation

