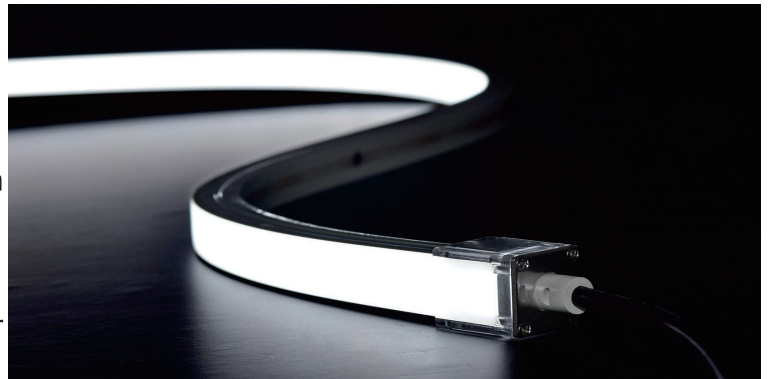
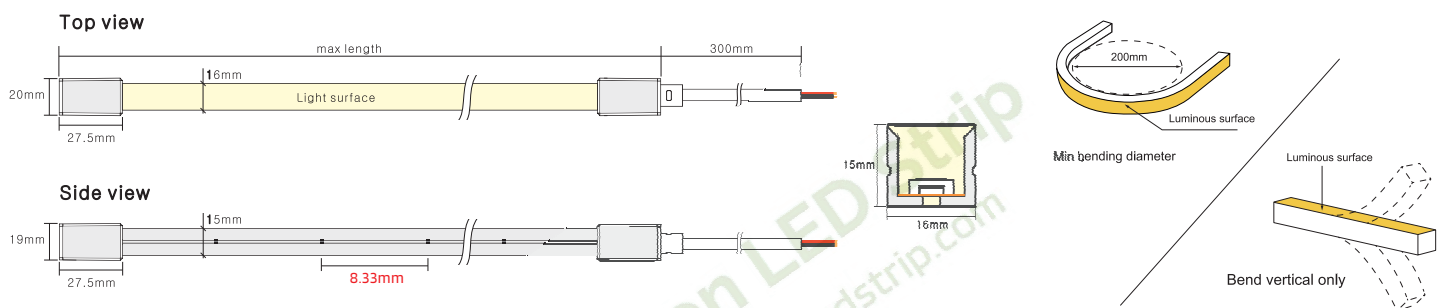


Key Feature

- Top View Neon Strip 16mm*15mm only
- IP67 waterproof grade, bending diameter is 200mm
- Uniform light output, no light spots
- With high quality, Soft light effect bringing better indoor and outdoor applications



Drawing



Basic PARAMETERS

Dimension	16mm × 15mm (W*H)	Cutting Unit	50mm (single color) / 50mm (tunable white) 62.5mm (RGB) / 62.5mm (RGBW)
Power/m	5W/10W/15W	Input Voltage	24VDC
CRI	90+	Ambient Temperature	-20°C ~ +45°C

Photo-electric Parameters (Single color)

CCT(K)	CCT Range	CRI	5W/M	10W/M	15W/M
			Lumen (LM/M)	Lumen (LM/M)	Lumen (LM/M)
2100k	2000-2200	90+	240	460	627
2400k	2300-2500	90+	242	468	660
2700K	2600-2800	90+	286	553	770
3000K	2900-3100	90+	286	540	767
3500K	3400-3700	90+	300	583	815
4000K	3800-4300	90+	295	573	807
5000K	4800-5300	90+	297	570	794
6000K	5900-6400	90+	293	570	782

Photo-electric Parameters (tunable color)











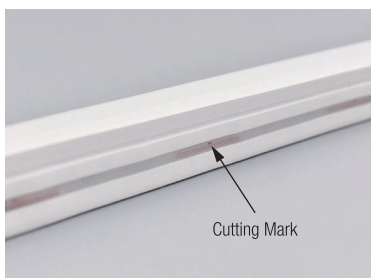
CCT(K)	CCT Range	CRI	5W/M	10W/M	15W/M
			Lumen (LM/M)	Lumen (LM/M)	Lumen (LM/M)
 WW	2000-2300	90+	130	275	360
 W	5600-6300	90+	143	295	387
 WW+W	3600-4200	90+	279	569	766

Photo-electric Parameters (RGB)

CCT(K)	Color (NM)	5W/M	10W/M	15W/M
		Lumen (LM/M)	Lumen (LM/M)	Lumen (LM/M)
 Red	620-625	112	237	320
 Green	515-525	308	549	698
 Blue	460-465	57	107	148
 Yellow	585-595	25	45	61
 Pink	Pink	116	224	302
 RGB	RGB	147	267	325
 RGBW	RGB+27	189	366	496

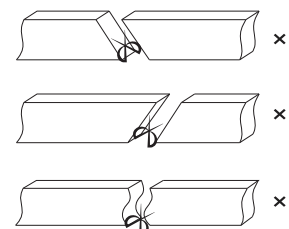
Cutting Mark



Remark:
The bottom of the led strip has transparent window, the black marker is the cutting position



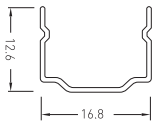
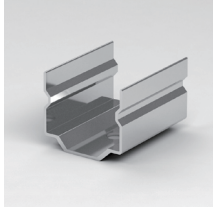
Use professional scissors to cut vertically at the cutting mark



Please don't be feel free to cut and cut into an oblique angle or cambered section.

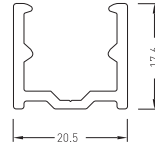
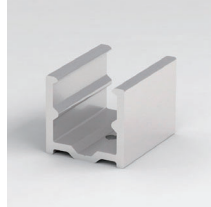
Mounting Way

Mounting Clips



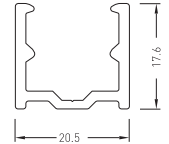
Dimension:
20x12.6x16.8mm

Aluminium Mounting clips



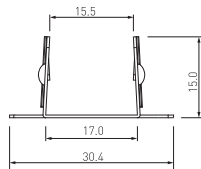
Dimension:
20x20.5x17.6mm

Aluminium Profile



Dimension:
1000x20.5x17.6mm

Curved aluminum profile



Dimension: 51.4x30.4x15mm

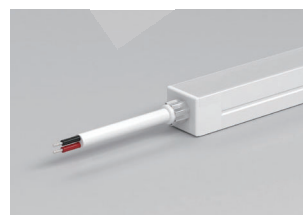
Suspension Installation



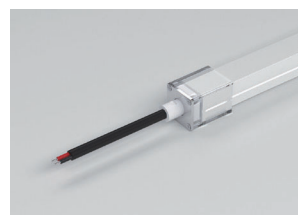
Cable Entry



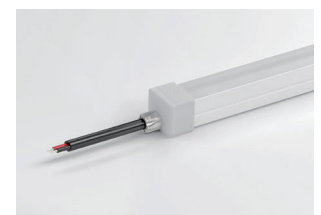
Integral plug



Combined end cap

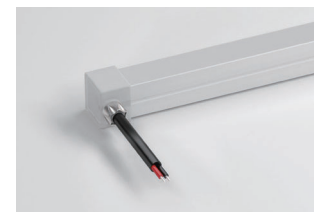


Silicone end cap



Front Cable Entry:
The cable could be hidden in all directions by the flexible design.

Side Cable Entry:
The cable could be perfectly hidden to achieve seamless light connection.



Bottom Cable Entry:
The cable could be perfectly hidden to achieve seamless light connection.

