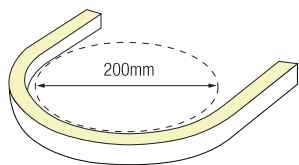
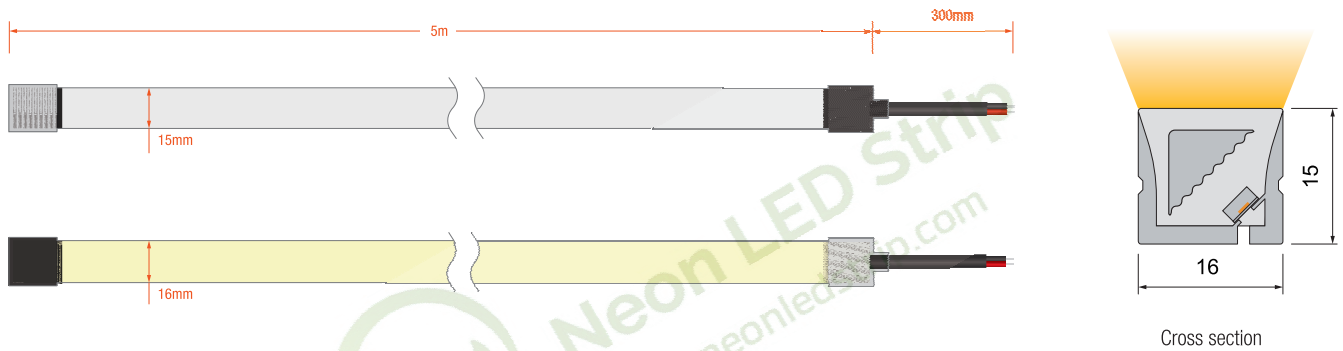


Key Feature

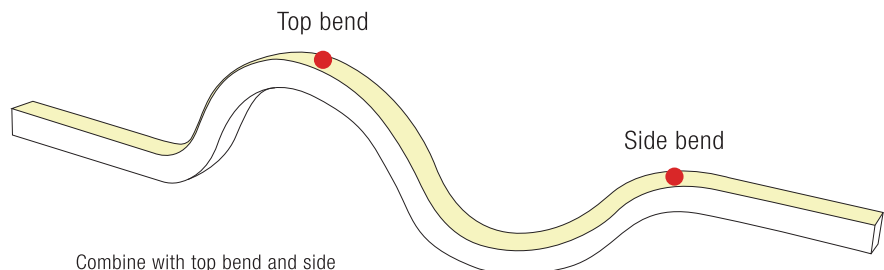
- 3D Silicone Neon Strip 16mm*15mm
- Combine with Top bend and Side bend
- IP67 Waterproof grade, Uniform light output
- With high quality, Soft light effect bringing better indoor and outdoor applications



Drawing



Min bending diameter



Combine with top bend and side bend, to meet the request of the different space bend.

Electrical Parameter

Voltage	DC24V
LED PIN Temperature	Max. 65°C
Storage Temperature	-25°C ~ 60°C
Ambient Temperature	Min. -25°C
CRI	>90

Specification

Power	5w/m	10w/m
Efficacy@4000K	77lm/w	73m/w
Max Ambient Temperature	55°C	45°C

Due to the tolerance of the production and electrical components, output value and electrical power can vary up to 10%

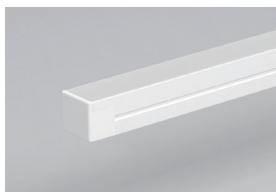
Single Color(Lm/m)

CCT(K)	CRI	Voltage	Power(W)	Lumen (LM/M)	Efficiency (LM/W)	Unit Length (mm)	Max. Run Length (M)	CC/CV
2100K±100	≥90	DC24V	10	600	60	50	5	CC/CV
2400K±100	≥90	DC24V	10	630	63	50	5	CC/CV
2700K±100	≥90	DC24V	10	670	67	50	5	CC/CV
3000K±100	≥90	DC24V	10	700	70	50	5	CC/CV
3500K ⁺²⁰⁰ / ₋₁₀₀	≥90	DC24V	10	730	73	50	5	CC/CV
4000K ⁺³⁰⁰ / ₋₂₀₀	≥90	DC24V	10	730	73	50	5	CC/CV
5000K ⁺³⁰⁰ / ₋₂₀₀	≥90	DC24V	10	750	75	50	5	CC/CV
6000K ⁺⁴⁰⁰ / ₋₁₀₀	≥90	DC24V	10	730	73	50	5	CC/CV
Red	--	DC24V	10	310	31	50	5	CC/CV
Green	--	DC24V	10	530	53	50	5	CC/CV
Blue	--	DC24V	10	140	14	50	5	CC/CV
Yellow	--	DC24V	10	260	26	50	5	CC/CV
Pink	--	DC24V	10	480	48	50	5	CC/CV

Integral end cap

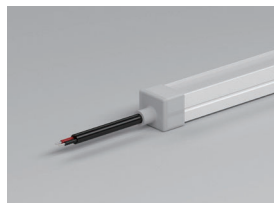


Front Cable Entry

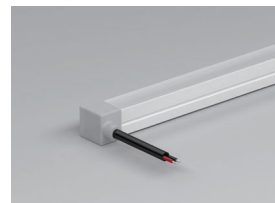


Closed end cap

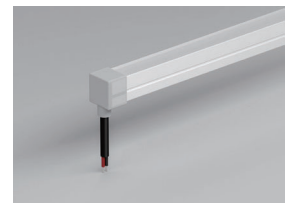
Silicone end cap



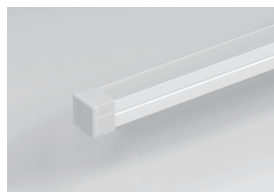
Front Cable Entry



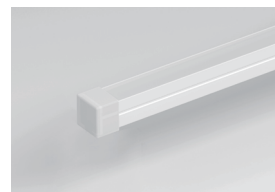
Side Cable Entry



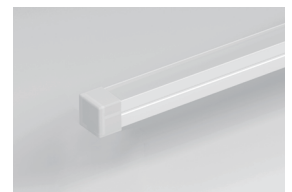
Bottom Cable Entry



Closed end cap



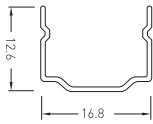
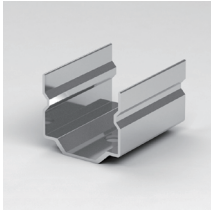
Closed end cap



Closed end cap

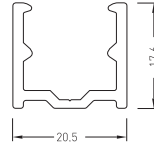
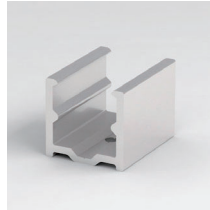
Mounting Way

Mounting Clips



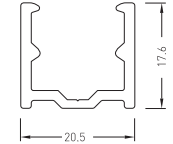
Dimension:
20x12.6x16.8mm
Accessories:
Screw M3x15mm

Aluminium Mounting clips



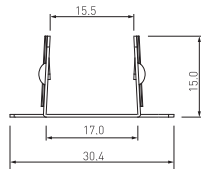
Dimension:
20x20.5x17.6mm
Accessories:
Screw M3x15mm

Aluminium Profile



Dimension:
1000x20.5x17.6mm
Accessories:
Screw M3x15mm

Curved aluminum profile



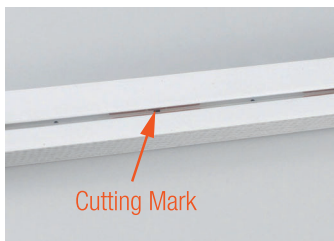
Dimension: 51.4x30.4x15mm
Accessories:
Screw M3x15mm

Suspension Installation



•Use with the profile

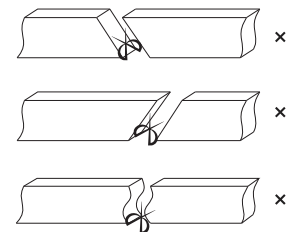
Cutting Mark



Remark:
The bottom of the led strip has transparent window,
the black marker is the cutting position



Use professional scissors
to cut vertically at the cutting mark



Please don't be feel free to cut and cut into an
oblique angle or cambered section.