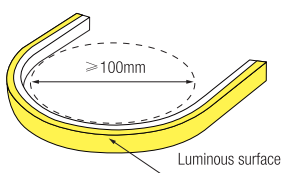
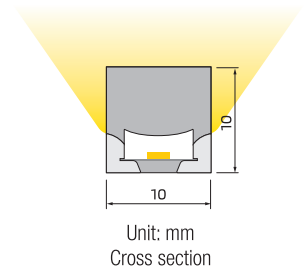
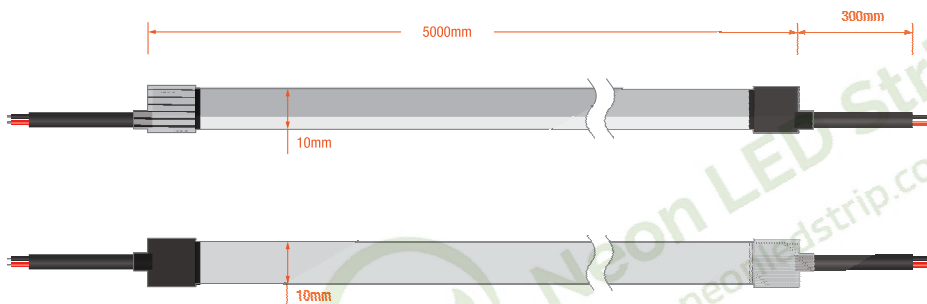


Key Feature

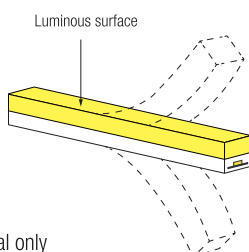
- Side View Neon Strip 10mm*10mm Only
- Normal power 5W/10W optional
- Ip67 Waterproof grade, Uniform light output
- With high quality, Soft light effect bringing better indoor and outdoor applications



Drawing



Min bending diameter



Bend vertical only

Electrical Parameter

Voltage	DC24V
LED PIN Temperature	Max. 65 C
Storage Temperature	-25 C ~ 60 C
Ambient Temperature	Min. -25°C, Max (Table below)
CRI	≥ 90

Specification

Power(w/m)	5w/m	10w/m
Efficacy(lm/w)@4000K	85.9 lm/w	82.9 lm/w
Max Ambient Temperature	55 C	45 C

Due to the tolerance of the production and electrical components, output value and electrical power can vary up to 10%.

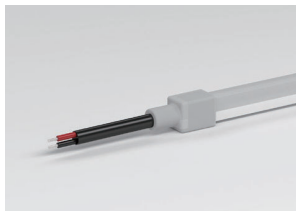
Single Color(Lm/m)

CCT(K)	CRI	Voltage	Power(W)	Lumen (LM/M)	Efficiency (LM/W)	Unit Length (mm)	Max. Run Length (M)	CC/CV
2100K±100	≥90	DC24V	10	645	64.5	35.7	5	CV
2400K±100	≥90	DC24V	10	685	68.5	35.7	5	CV
2700K±100	≥90	DC24V	10	740	74	35.7	5	CV
3000K±100	≥90	DC24V	10	790	79	35.7	5	CV
3500K ⁺²⁰⁰ / ₋₁₀₀	≥90	DC24V	10	720	72	35.7	5	CV
4000K ⁺³⁰⁰ / ₋₂₀₀	≥90	DC24V	10	830	83	35.7	5	CV
5000K ⁺³⁰⁰ / ₋₂₀₀	≥90	DC24V	10	830	83	35.7	5	CV
6000K ⁺⁴⁰⁰ / ₋₁₀₀	≥90	DC24V	10	810	81	35.7	5	CV
Red	--	DC24V	10	330	33	35.7	5	CV
Green	--	DC24V	10	920	92	35.7	5	CV
Blue	--	DC24V	10	175	17.5	35.7	5	CV
Yellow	--	DC24V	10	300	30	35.7	5	CV
Pink	--	DC24V	10	350	35	35.7	5	CV

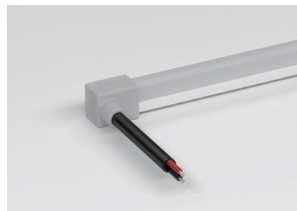
- The given color temperature is the temperature of finished product.
- The given data are typical values due to the tolerances of the production process and the electrical components, values for light output and electrical power can vary up to 10%.
- All products can be dimmed; the dimmer's voltage should conform to the rated voltage of the led light.
The output frequency of the dimmer of the constant-current led light should be less than 2K Hz, and the output PWM can control the led light.

Cable Entry

Silicone end cap (IP67)



Front Cable Entry



Side Cable Entry



Bottom Cable Entry

Integral end cap(IP65)



Front Cable Entry