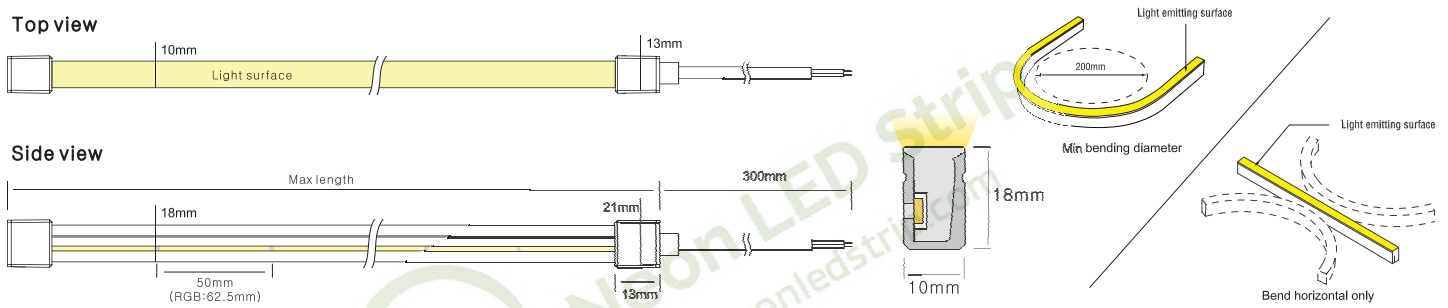


## Key Feature

- Side View Neon Strip 10mm\*18mm only
- IP67 waterproof grade, bending diameter is 200mm
- Uniform light output, no light spots
- With high quality, Soft light effect bringing better indoor and outdoor applications



## Drawing



## Basic PARAMETERS




Dimension	10mm × 18mm(W*H)
Power/m	5W/10W/15W
CRI	90+

Cutting Unit	50mm(single color)50mm(tunable white) 62.5mm(RGB)
Input Voltage	24VDC
Ambient Temperature	-20°C~+45°C







## Photo-electric Parameters (Single color)

CCT(K)	CCT Range	CRI	5W/M	10W/M	15W/M
			Lumen (LM/M)	Lumen (LM/M)	Lumen (LM/M)
2100K	2000-2200	90+	141	276	375
2400K	2300-2500	90+	138	273	371
2700K	2600-2800	90+	160	312	421
3000K	2900-3100	90+	163	328	441
3500K	3400-3700	90+	170	327	452
4000K	3800-4300	90+	178	356	484
5000K	4800-5300	90+	180	346	483
6000K	5900-6400	90+	177	353	468

## Photo-electric Parameters (tunable color)

CCT(K)	CCT Range	CRI	5W/M	10W/M	15W/M
			Lumen (LM/M)	Lumen (LM/M)	Lumen (LM/M)
 WW	2000-2300	90+	77	163	219
 W	5600-6300	90+	83	173	231
 WW+W	3500-4200	90+	160	337	451

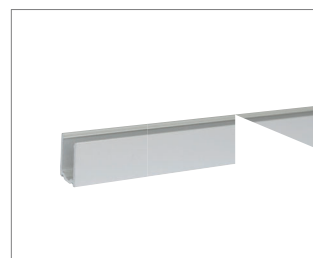
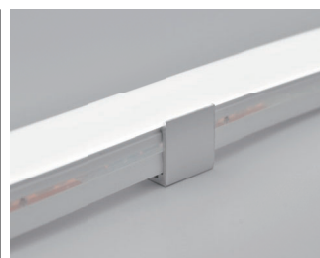
## Photo-electric Parameters (RGB)

CCT(K)	Color (NM)	5W/M	10W/M	15W/M
		Lumen (LM/M)	Lumen (LM/M)	Lumen (LM/M)
 Red	620-625	67	145	192
 Green	515-525	195	369	466
 Blue	460-465	34	64	92
 Yellow	585-595	14	30	37
 Pink	Pink	74	148	195
 RGB	RGB	77	152	180

## Mounting Way



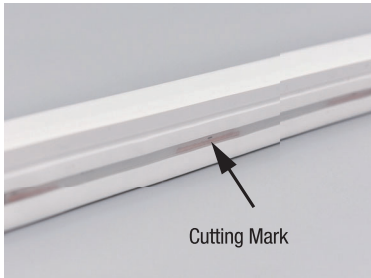
Stainless Steel Mounting clips  
20x13x17.5mm(L x W x H)



Aluminium Profile  
1000x13x17.5mm(L x W x H)

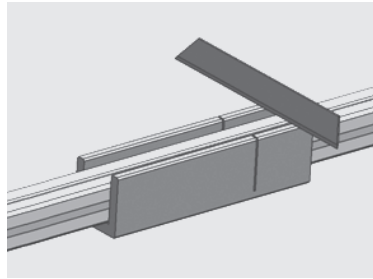


## End Cap's Fast Installation Process

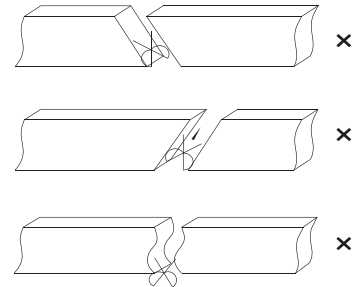


Cutting Mark

Remark: The bottom of the led strip has transparent window, the black marker is the cutting position

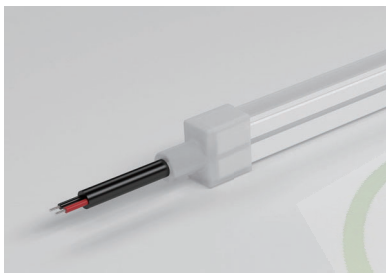


Use a cutting jig, vertical cutting precisely in the exact cutting position of led strip.

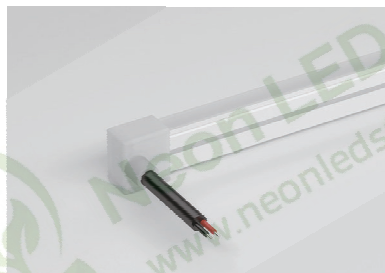


Please don't be feel free to cut and cut into an oblique angle or cambered section.

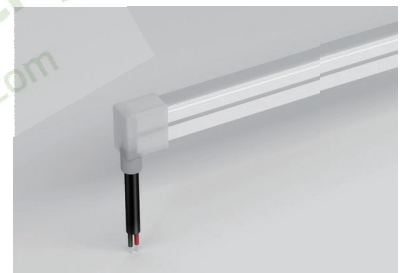
## Cable Entry(Silicone end cap)



Front Cable Entry



Side Cable Entry



Bottom Cable Entry