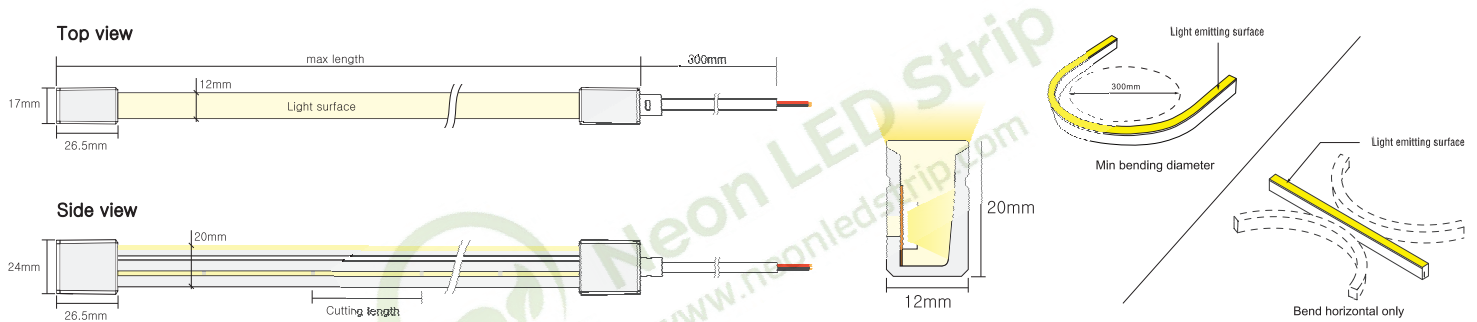


Key Feature

- Side View Neon Strip 12mm*20mm only
- IP67 waterproof grade, bending diameter is 300mm
- Uniform light output, no light spots
- With high quality, Soft light effect bringing better indoor and outdoor applications



Drawing



Basic PARAMETERS

Dimension	12mm × 20mm(W*H)	Cutting Unit	50mm(single color)50mm(tunable white) 62.5mm(RGB)62.5mm(RGBW)
Power/m	5W/10W/15W	Input Voltage	24VDC
CRI	90+	Ambient Temperature	-20°C~+45°C

Photo-electric Parameters (Single color)

CCT(K)	CCT Range	CRI	5W/M	10W/M	15W/M
			Lumen (LM/M)	Lumen (LM/M)	Lumen (LM/M)
2100K	2000-2200	90+	131	258	360
2400K	2300-2500	90+	150	293	410
2700K	2600-2800	90+	152	301	430
3000K	2900-3100	90+	156	307	432
3500K	3400-3700	90+	176	345	478
4000K	3800-4300	90+	170	335	470
5000K	4800-5300	90+	170	329	461
6000K	5900-6400	90+	168	328	465

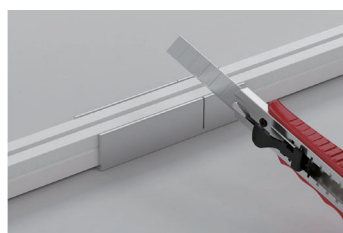
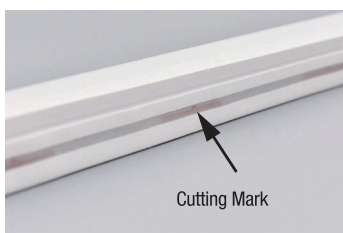
Photo-electric Parameters (tunable color)

CCT(K)	CCT Range	CRI	5W/M	10W/M	15W/M
			Lumen (LM/M)	Lumen (LM/M)	Lumen (LM/M)
● WW	2000-2300	90+	80	170	229
● W	5600-6300	90+	85	186	244
● WW+W	3600-4200	90+	167	353	476

Photo-electric Parameters (RGB)

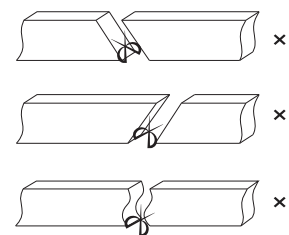
CCT(K)	Color (NM)	5W/M	10W/M	15W/M
		Lumen (LM/M)	Lumen (LM/M)	Lumen (LM/M)
● Red	620-625	73	155	204
● Green	515-525	198	372	473
● Blue	460-465	35	69	93
● Yellow	585-595	15	30	40
● Pink	Pink	74	148	199
● RGB	RGB	86	160	200
● RGBW	RGB+27	110	211	302

End Cap's Fast Installation Process



Remark: The bottom of the led strip has transparent window, the black marker is the cutting position

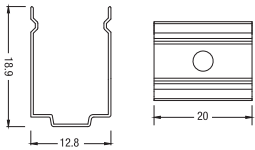
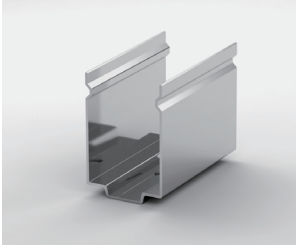
Use a cutting jig, vertical cutting precisely in the exact cutting position of led strip.



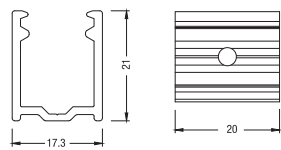
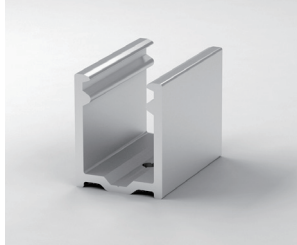
Please don't be feel free to cut and cut into an oblique angle or cambered section.

Mounting Way

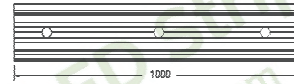
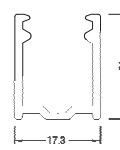
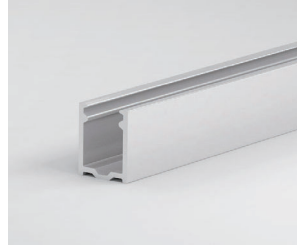
Stainless Steel Mounting clips



Aluminium Mounting clips



Aluminium Profile

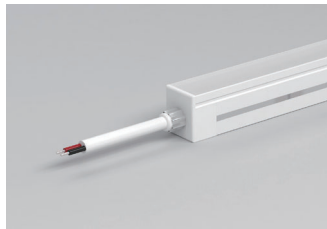


Suspension Installation

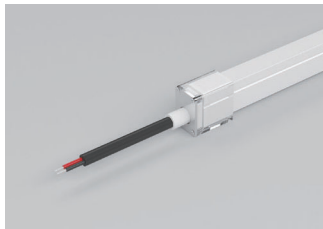


Cable Entry

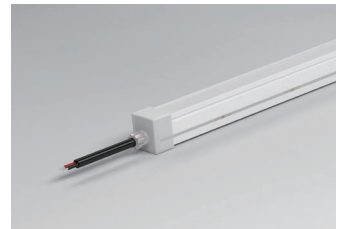
Integral plug



Combined end cap



Silicone end cap



Front Cable Entry:
 The cable could be hidden in all directions by the flexible design.

Side Cable Entry:
 The cable could be perfectly hidden to achieve seamless light connection.

Bottom Cable Entry:
 The cable could be perfectly hidden to achieve seamless light connection.

